

# AREALIST™ PRO 8.0

Last Update: October 16, 2007

Automated Solutions Group  
16742 Gothard Street, Suite 210  
Huntington Beach, CA 92647  
714.375.4252  
714.848.0382 FAX  
<<http://www.asgsoft.com>>  
<<mailto:sales@asgsoft.com.com>>

---

## Release History

### REQUIREMENTS:

- AreaList Pro 8.0 requires 4th Dimension 2003 or greater.

Version 8.0 - October 16, 2007 — First Release (Universal Binary and .Bundle Format)

---

## Introduction

AreaList Pro 8.0 contains many new enhanced features and bug fixes from previous 7.8.x releases. If you are using an existing version of AreaList Pro™, you will need to upgrade and obtain a new registration number as your existing registration number will not function with ALP 8.0.

For more information about upgrading to AreaList Pro 8.0, please contact our sales department.

E-Mail: [sales@asgsoft.com](mailto:sales@asgsoft.com)  
Phone: 800.375.4274

---

## What's New in 8.0

AreaList™ Pro 8.0 includes many new enhancements and is now available as a Universal Binary plug-in, working natively with 4th Dimension v11.

---

## Registration

AreaList Pro requires a registration number to "unlock" the product making it a full working version. Call the **AL Register** command (see the manual for syntax) in the On Startup procedure. Without the serial number, AreaList Pro will operate in demonstration mode.

When deploying applications which include AreaList Pro, you must purchase a valid server license or runtime license as the developer version is not intended for deployment purposes. For more information about the various deployment options, please contact our sales department.

AreaList Pro 8.0 requires new registration numbers, your existing ALP registration numbers will not work with ALP 8.0. Please contact Automated Solutions Group for upgrade information.

---

## Documentation

The AreaList Pro Developer Reference is in Adobe Acrobat PDF format, and requires Acrobat Reader v7 or greater. The Acrobat Reader application is included on the 4D Products CD-ROM, and is also available for free download from the Adobe Web site (<http://www.adobe.com/>).

---

## Important Upgrade Information

### ALP and Enterability

If you are upgrading an existing application which uses data entry with ALP, you should be aware of the following important items:

- Field Display - don't change selection
- Adding or Deleting rows from form button

- Properly Configuring Entry / Exit Callbacks
- Initiating Data Entry - click and hold

### **Field Display**

If you are using ALP to display fields and are performing custom actions via ALPs exit callback (see AL\_SetCallback) you should no longer be executing code which will change the current selection as ALP now maintains the current record status when the exit callback method is invoked.

For example, with previous versions of 4D you had to do something like the following in your exit callback code:

```
AL_GetCurrCell($1;$row;$col)
GOTO SELECTED RECORD([Customers];$row)
```

This is no longer required and if the code is still making this type of call that will change the current selection, you will lose your edits.

Note: When inside the callback method, you can obtain the previous table value by using the 4D Command **Old**.

```
$prevValue:=Old([Customers]Zip)
If ($prevValue#[Customers]Zip)
  $ret:=ZC_LookupZip([Customers]Zip;->[Customers]City;[Customers]State)
End if
```

### **Adding or Deleting Rows from form button**

When using ALP as an included layout, it is common to have buttons in the input form to Add or Delete rows from the ALP area. If you have code that performs this type of action, you will need to make a small change to your code so that records are correctly added/deleted when using enterability. There three different methods you can use to handle this issue.

1. Option one will be to modify the call to **AL\_SetEntryOpts** to instruct 4D to commit the current cell when focus is lost

```
AL_SetEntryOpts(eArea;n+8;...) `where n is the desired data entry trigger
```

2. Option two will be to call **AL\_ExitCell** in the script of the add or delete button on each method which performs a similar action.

```
AL_ExitCell(eCustomers)
```

3. Place a call in each of the exit callback methods to instruct ALP to exit the cell

```
AL_ExitCell($1)
```

### **Properly Configuring Exit Callback**

When using an exit callback method, ALP now requires the existence of a result value (C\_BOOLEAN) and failure to have the callback method incorrectly declared will produce an error in compiled applications (see screenshot.) Your callback method should be declared as

```
`PM: ALP_CB
C_BOOLEAN($0) `required ALP 7.9 or greater
C_LONGINT($1;$AL_AREA)
C_LONGINT($2;$AL_CAUSE)
```

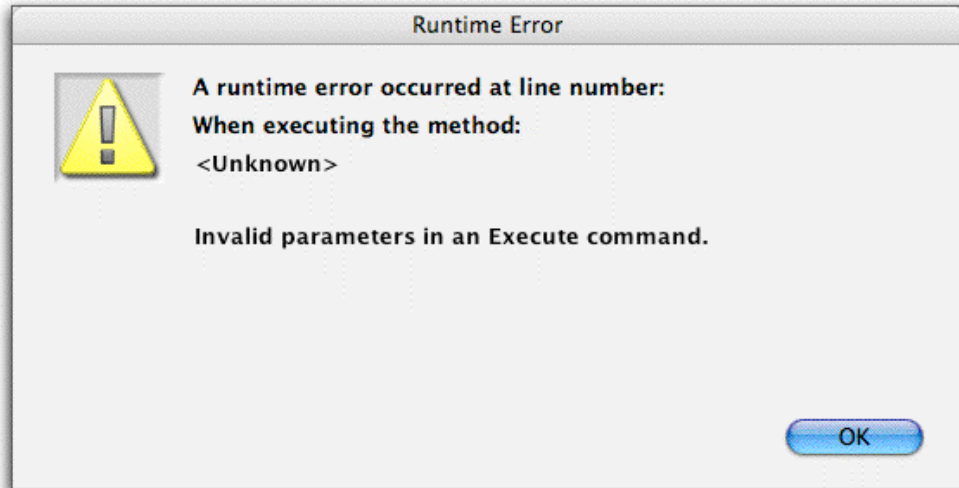


Figure 1 - Compiled runtime error when \$0 not declared

---

### Compatibility Information

AreaList Pro™ is fully compatible with 4D/4D Server 2003 or greater (including 4D 2003/2004). AreaList Pro™ is compatible with Macintosh and Windows clients. AreaLilst Pro™ is compatible with 4D v11.

---

### Technical Support

Technical support for AreaList Pro will be provided via electronically via e-mail or our online support reporting system. You are encouraged to use the online web reporting form as it will be correctly routed to the appropriate support personnel.

Tel (714) 375-4252  
Fax (714) 848-0382  
<<http://www.asgsoft.com/support/>>  
<<mailto:support@asgsoft.com>>